



Uniwersytecki Szpital Kliniczny  
Nr 4 w Lublinie



**Epilepsy  
Surgery  
Mentoring**

Jun 15, 2025 - Jun 19, 2025

**Lublin, Poland**

**Prepared by:**

Dr Pawel Szmygin - Neurosurgeon, Clinical Hospital of Medical University of Lublin



## **Impact of the ILAE EPODES School on the Development of Epilepsy Surgery**

**ILAE School on Pre-Surgical Evaluation for Epilepsy and Epilepsy Surgery EPODES in Brno, Czech Republic**, has a truly international reach and a real impact on the landscape of epilepsy diagnosis and treatment.

It was at 2024 and 2025 editions of EPODES in Brno, where ILAE Experts **Dr Arthur Cukiert** and **Dr Cristine Cukiert** encouraged Polish Epileptologist **Dr Jacek Gawlowicz** and Neurosurgeon **Dr Pawel Szmygin**, to believe that epilepsy surgery can become reality in Lublin, south-eastern Poland.

**Medical University Hospital in Lublin** with catchment area of 2,5 million people, did not have a well-organized modern epilepsy surgery program.

In numerous online meetings led and coordinated by Arthur and Cristine Cukiert, epilepsy teams from Brazil, Mexico, Paraguay and Poland presented their patients. Team from Lublin had to gradually improve their MR and PET protocols, epilepsy monitoring unit as well as develop understanding for specific clinical features of the patient eligible for epilepsy surgery.



Photos: Lukasz Glaczkowski

As we focused on easier, MRI-positive epilepsy cases, mesial temporal sclerosis was the main entity we discussed and intended to treat. Before performing amygdalohippocampectomy, we needed the convincing report from an experienced clinical neuropsychologist.

.....

Professor Sallie Baxendale from University College London helped our neuropsychologist – Monika Kitowska, introduce an structured and up-to-date assessment protocol. We discussed, how the neuropsychological evaluation translates into decision-making and risk-assessment in surgical

candidates. In fact, for the first time ILAE Local Mentoring Program included visiting Neuropsychologist.

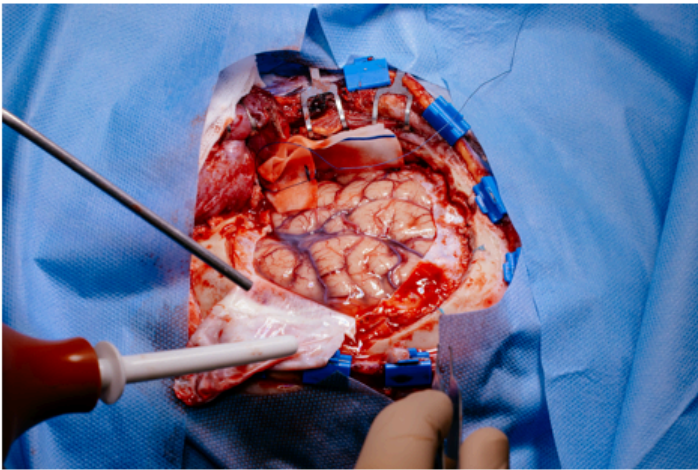


Photos: Lukasz Glaczkowski



## **On-Site Mentoring Visit and Surgical Procedures in Lublin**

The tutoring team – Dr Arthur Cukiert, Dr Cristine Cukiert and Professor Sallie Baxendale – stayed in Lublin on June 15<sup>th</sup>-19<sup>th</sup>. The surgeons performed 3 anterior temporal lobectomies with particular emphasis on intraoperative studying of epilepsy related anatomy of mesial temporal lobe. At the same time, Neurologists and Neuropsychologist examined the Patients, analyzed the video-EEG, performed tests. 2 additional Patients were selected for surgical treatment in the near future.





Photos: Lukasz Glaczkowski

Patient	Diagnostic	Procedure performed	Outcome
<b>Patient 1</b> Female, 59 yo	Right hippocampal sclerosis, temporal seizures 3x week	Right anterior temporal lobectomy and amygdalohippocampectomy	Seizure-free Engel IA
<b>Patient 2</b> Male, 48 yo	Right hippocampal sclerosis, temporal seizures 4x month	Right anterior temporal lobectomy and amygdalohippocampectomy	Seizure reduction Engel III Candidate for re-evaluation, possibly SEEG
<b>Patient 3</b> Female, 57 yo	Left hippocampal sclerosis, temporal seizures 3x week	Left anterior temporal lobectomy and amygdalohippocampectomy	Seizure-free Engel IA
<b>Patient 4</b> Male, 47 yo	Left temporal cavernoma, temporal seizures 1x week	Lesionectomy	Seizure-free Engel IA

## **\* Events for promotion of epilepsy awareness and impact on community**

At the end of the mentorship, a meeting with professionals and public was organized. The event drew a broad attention of local and national media. Numerous cooperation offers from Neurologist nationwide and many enquires from epilepsy-affected Patients followed.

Luckily, all the surgeries were without complications and satisfied Patients share their experience in their communities.



Photos: Lukasz Glaczkowski

The Local Mentoring received enthusiastic support for the Authorities of Medical University Hospital and it sparked a lasting and growing cooperation between Neurology and Neurosurgery Departments in this field.

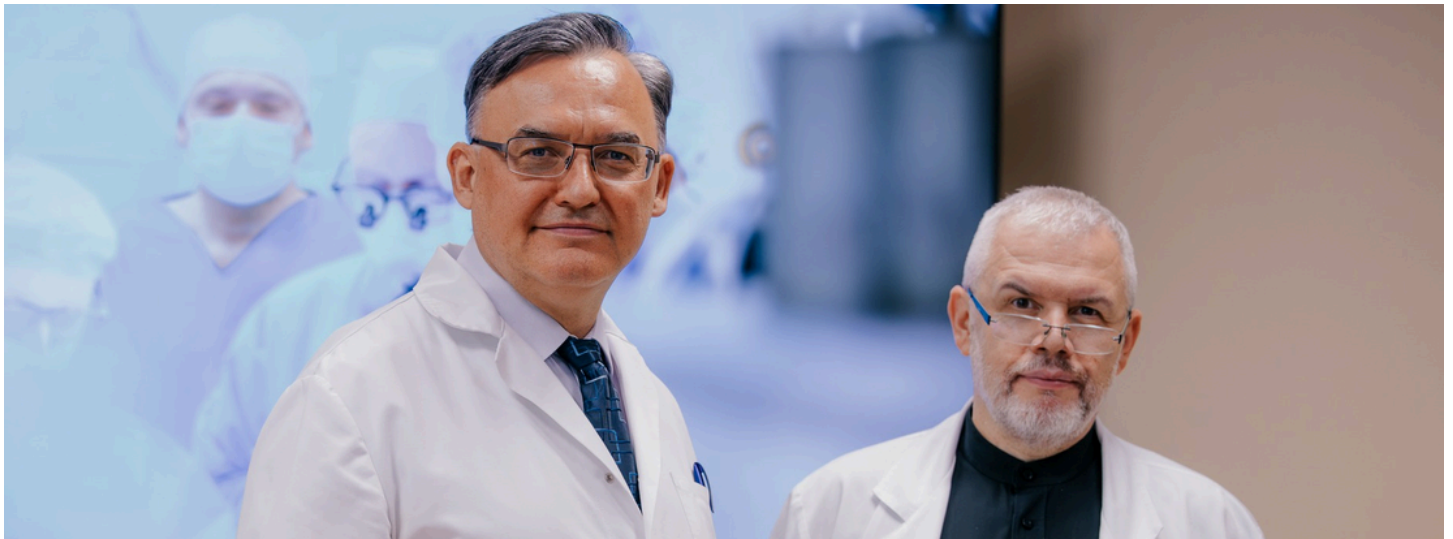


Photo: Lukasz Glaczkowski

---

#### Links to websites – media publications:

- <https://www.facebook.com/SPSKNr4/posts/pfbid0kydgt9QsuJMRHY1zXhhCzzRPQta2y81o6Jb5BppsS6n6Nf32ooo68R4cxWBmrnFel> - social media of Clinical Hospital of Medical University of Lublin
- 🌐 Program kompleksowego postępowania diagnostyczno-leczniczego u pacjentów z pad...
- 🌐 Innowacyjna pomoc dla pacjentów z padaczką lekooporną - nowy program w Lublinie
- 🌐 Lublin pionierem w leczeniu padaczki lekoopornej
- 🌐 Ten projekt to gamechanger. Lubelski szpital z przełomowym leczeniem padaczki leko...
- 🌐 Nowy program kompleksowego postępowania diagnostyczno-leczniczego u pacjentów...
- 🌐 Pacjenci z lekooporną padaczką z szansą na leczenie chirurgiczne
- 🌐 Operacja szansą na wyleczenie lekoopornej padaczki. Lubelscy lekarze stworzyli progr...
- 🌐 Lublin pionierem w leczeniu padaczki lekoopornej. Nowy program szpitala klinicznego...
- 🌐 Najcięższa postać padaczki na celowniku lubelskich lekarzy
- 🌐 Szpital rusza z pomocą dla tych, którym nie pomagają leki
- 🌐 Nowy program dla pacjentów z padaczką lekooporną. USK Nr 4 w Lublinie pionierem ...
- 🌐 Kompleksowo leczyć padaczkę
- 🌐 Lublin – pacjenci z lekooporną padaczką z szansą na leczenie chirurgiczne



#### Future Development of the Epilepsy Surgery Program and Ongoing International Collaboration

As a big-volume referral center, Medical University of Lublin Hospital, intends to implement more advanced diagnostic and therapeutic methods for epilepsy patients. We have the technical

and financial capacities to perform PET, SPECT, SEEG, DBS, VNS as well as variety of resective and disconnective surgeries.

**The friendship with ILAE experts resulted in further meetings** – such as during the ILAE Congress in Lisbon. Dr Pawel Szmygin has completed an observership at Neurosurgery Department of Medical University of Vienna – focus epilepsy surgery.

We continue to present epilepsy cases in the online meetings organized by Arthur and Cristine Cukiert. The number of surgical epilepsy patients is ever growing and we plan to select a group of more complex patients – requiring invasive monitoring and neuromodulation – for the second visit of ILAE Experts.

## **\* Professionals Involved in Polish Mentoring - National and International -**



### **National Representatives**

**Dr Jacek Gawlowicz** - Neurologist, Clinical Hospital of Medical University of Lublin

**Dr Pawel Szmygin** - Neurosurgeon, Clinical Hospital of Medical University of Lublin

**Dr Marek Mazurek** - Neurosurgeon, Clinical Hospital of Medical University of Lublin

**Prof. Radoslaw Rola** - Neurosurgeon, Head of Neurosurgery Department, Clinical Hospital of Medical University of Lublin

**Prof. Konrad Rejdak** - Neurologist, Head of Neurology Department, Clinical Hospital of Medical University of Lublin



### **International Guests**

**Dr. Arthur Cukiert** - Representative Task Force of Cx Epilepsia ILAE

**Dr. Cristine Cukiert** - Cukiert Clinical Neurophysiology SP, Br

**Prof. Sallie Baxendale** - UCL, Queen Square, Institute of Neurology

### **Contact:**



Pawel.Szmygin@usk4.lublin.pl



+48 511 572 578