



1st International Training Course on Neuropsychology in Epilepsy

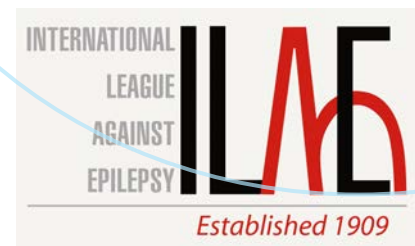
Château de Rosay, France, April 10-15, 2016

Neuropsychology Task Force, ILAE
Course Directors

Sarah Wilson (Melbourne) Sallie Baxendale (London)
Gus Baker (Liverpool) Séverine Samson (Paris)

For more information, please contact:

Neuropsychology Course Secretariat, Melbourne, Australia
sarah-ra@unimelb.edu.au Tel: +61 3 8344 0398



Welcome

On behalf of the Neuropsychology Task Force of the International League Against Epilepsy, we are proud to announce the First Educational Training Course in Neuropsychology in Epilepsy, which will be held from the 10th – 15th April in 2016.

Situated on the edge of the Lyons Forest, the course will be held in the Château de Rosay, set in the beautiful countryside of Normandy, France. The course is designed for neuropsychologists and other epilepsy health clinicians to advance their knowledge of neuropsychological approaches to the diagnosis and treatment of people with epilepsy, and to aid understanding of neuropsychological practice.

Participants will take part in lectures, case presentations, and discussions designed to illustrate principles of differential diagnosis and case formulation in neuropsychological practice in epilepsy. Course material will be presented by leading clinical experts in the field, including clinical neuropsychologists working in epilepsy programs from around the world.

Participants will also take part in a group project focusing on how to audit neuropsychological outcomes in clinical epilepsy practice, and provide neuropsychological education and feedback to patients and their families.

We hope you can join us, and look forward to welcoming you at the Château de Rosay in 2016.

Neuropsychology Faculty

Sarah Wilson (Melbourne)

Sallie Baxendale (London)

Gus Baker (Liverpool)

William Barr (New York)

Christoph Helmstaedter (Bonn)

Bruce Hermann (Madison)

Séverine Samson (Paris)

Mary-Lou Smith (Toronto)

Organisation

Neuropsychology Course Secretariat

sarah-ra@unimelb.edu.au

Tel: +61 3 8344 0398

Program

Day One

Introduction to anatomy, epilepsy and neuropsychology

- The brain and epilepsy: a neuropsychologist's perspective
- The profession of neuropsychology: training and evidence-based practice
- Psychometric properties of neuropsychological tests
- Discussion and organisation of Group Projects
- Team building exercise

Day Two

Diagnostic neuropsychological assessment in epilepsy

- New onset epilepsy
- Chronic epilepsy
- Epilepsy surgery (including fMRI, WADA, awake craniotomies)
- Case presentation and discussion
- Group Project work

Day Three

Diagnostic neuropsychological assessment in epilepsy

- Paediatric epilepsy
- Late onset epilepsy
- Medication effects in the assessment of epilepsy
- Case presentation and discussion
- Group Project work

Day Four

Diagnostic neuropsychological assessment in epilepsy

- Psychiatric and behavioural comorbidities of epilepsy
- Intellectual disability and epilepsy
- Cultural factors in the assessment of epilepsy
- Case presentation and discussion
- Group Project work

Day Five

Clinical neuropsychological applications

- Interventions: feedback and rehabilitation
- Outcome assessments in research
- Translation to the local setting: anticipated barriers and solutions (group discussion)
- Group Project presentations and discussion
- Conclusions

Registration

Please register in advance as spaces will be limited to 36 participants, and there will be no on-site registration available.

To be considered, applications must be received by January 15th 2016. We urge that you apply as soon as possible to reserve your spot and avoid disappointment.

Applications should include a brief 1-page description of your current clinical practice and experience in the field of neuropsychology and/or epilepsy, accompanied by a short CV (no more than 3 pages).

Please send your application via email to the Neuropsychology Secretariat at sarah-ra@unimelb.edu.au.

Selected participants will be informed via email no later than 15 working days from the application deadline, and will receive all further instructions regarding payment and registration.

Registration fee: 1,250 €

This fee covers the cost of food and accommodation for the 5-day program, including coach transfers to and from the course venue from Charles de Gaulle airport, but excluding airfares.

The registration fee must be paid by February 1st 2016 In order to secure a place in the course. A limited number of scholarship will be available for participants experiencing financial hardship.



1st International Training Course on Neuropsychology in Epilepsy

April 10-15, 2016
Château de Rosay, France

Neuropsychology Task Force, ILAE
Course Directors:

Sarah Wilson (Melbourne)
Sallie Baxendale (London)
Gus Baker (Liverpool)
Séverine Samson (Paris)

FOR MORE INFORMATION, PLEASE CONTACT:

Neuropsychology Course Secretariat,
e-mail: sarah-ra@unimelb.edu.au
Tel: +61 3 8344 0398

INTERNATIONAL
LEAGUE
AGAINST
EPILEPSY **ILAE**

Established 1909